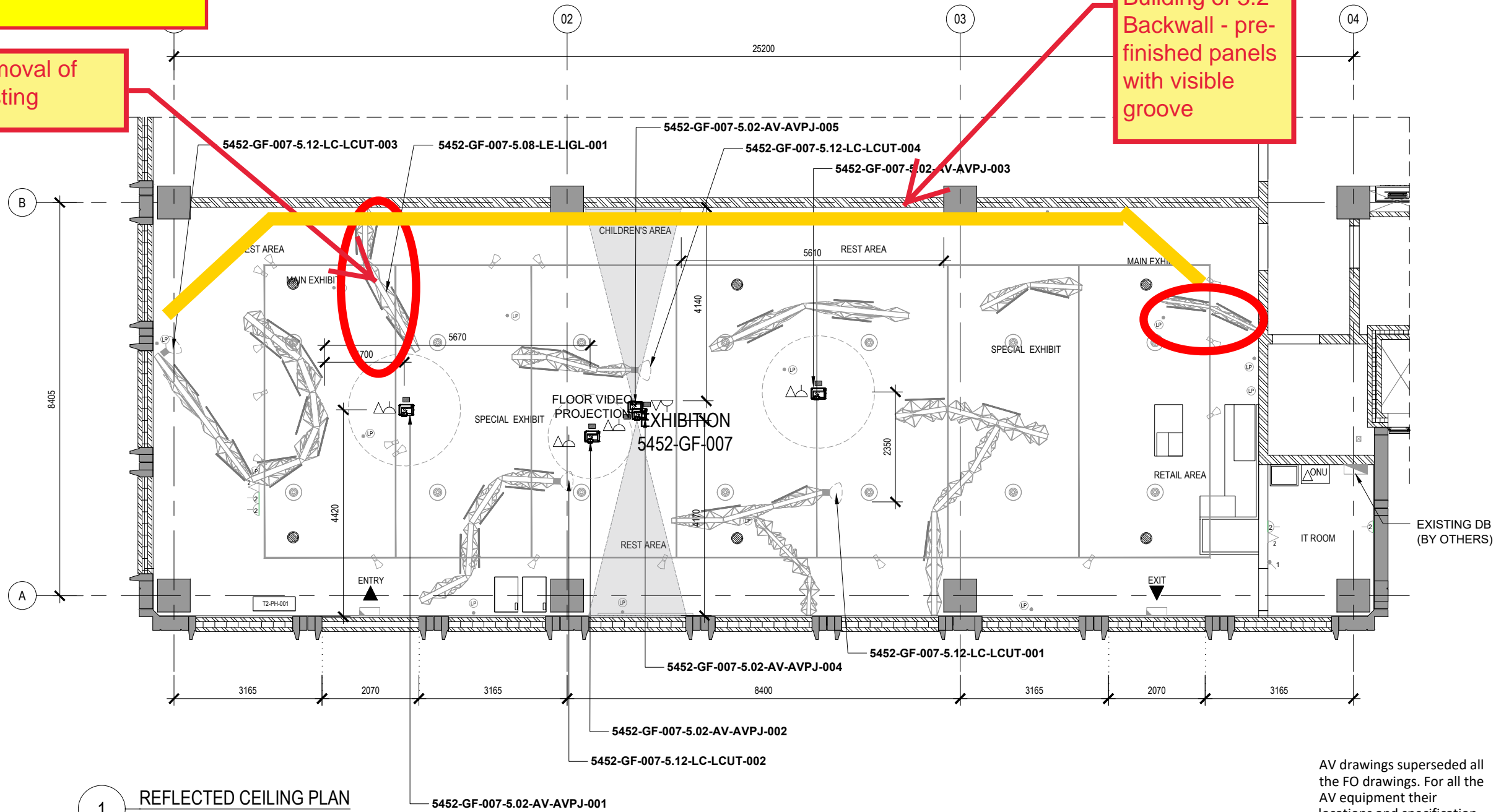


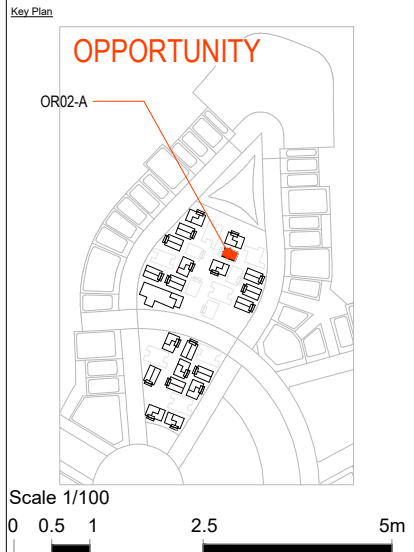
1st NIGHT

Removal of existing

Building of 3.2 Backwall - pre-finished panels with visible groove



Copyright by Bureau Expo Dubai 2020 (EX20). All rights reserved. This document may not, in whole or in part, be reproduced, stored, transmitted or distributed in any form or by any means, whether electronic, mechanical, by photocopy, recording or otherwise, without the prior written permission of EX20. Except where otherwise expressly agreed in writing by EX20, EX20 shall have no responsibility or liability for any loss (direct, consequential or otherwise) which may arise from reliance on or use of this document or the information contained therein.
DO NOT SCALE THIS DRAWING.



Scale 1/100
0 0.5 1 2.5 5m

General Notes

AS BUILT

As per approved materials, finishes and documents.

No	Description	Apr	Chk'd	Date
A	ISSUED FOR APPROVAL	--	--	19/06/2020
1	ISSUED FOR APPROVAL	--	--	26/01/2020

Client: **EXPO 2020**

Programme Management Consultant
ch2m | imace

Design Consultant
ARCHIPLEXUS Architecture & Design

Exhibition Contractor
acciona Producciones y Diseño

Sub-Contractor
ELECTRA

Project Title
THEMATIC DISTRICT PAVILIONS

Project Address
EXPO EVENT U00 / IPA003 / 5452 GF FLOW SPACE - OR02-A "R" TYPE REFLECTED CEILING PLAN

Approved APD	Drawn EA	Checked IK	Seal Date 26/01/2020
Model File Ref. ---	Scale A3 (297x420) 1:100	Revision No. A	
Drawing No 94001-SDW-IPA0035452-FO-2GF203			

1 REFLECTED CEILING PLAN
SCALE 1:100 @ A3

SHOP DRAWING REVIEW Date 05/07/20

- A - No Objection
- B - No Objection subject to comments
- C - Objection
- D - Record Only

Architect's review is for general conformance with the design concept and contract documents. Markings or comments shall not be construed as relieving the contractor from compliance with the project plans and specifications, nor departures therefrom. The contractor remains responsible for details and accuracy, for confirming and correlating all quantities and dimensions, for selecting of the fabrication processes, for techniques of assembly and for performing his work in a safe manner.

By **Anastasios Kyriazis** **ARCHIPLEXUS** Architecture & Design

CEILING COLOR SCHEME
CEILING COLOR RAW

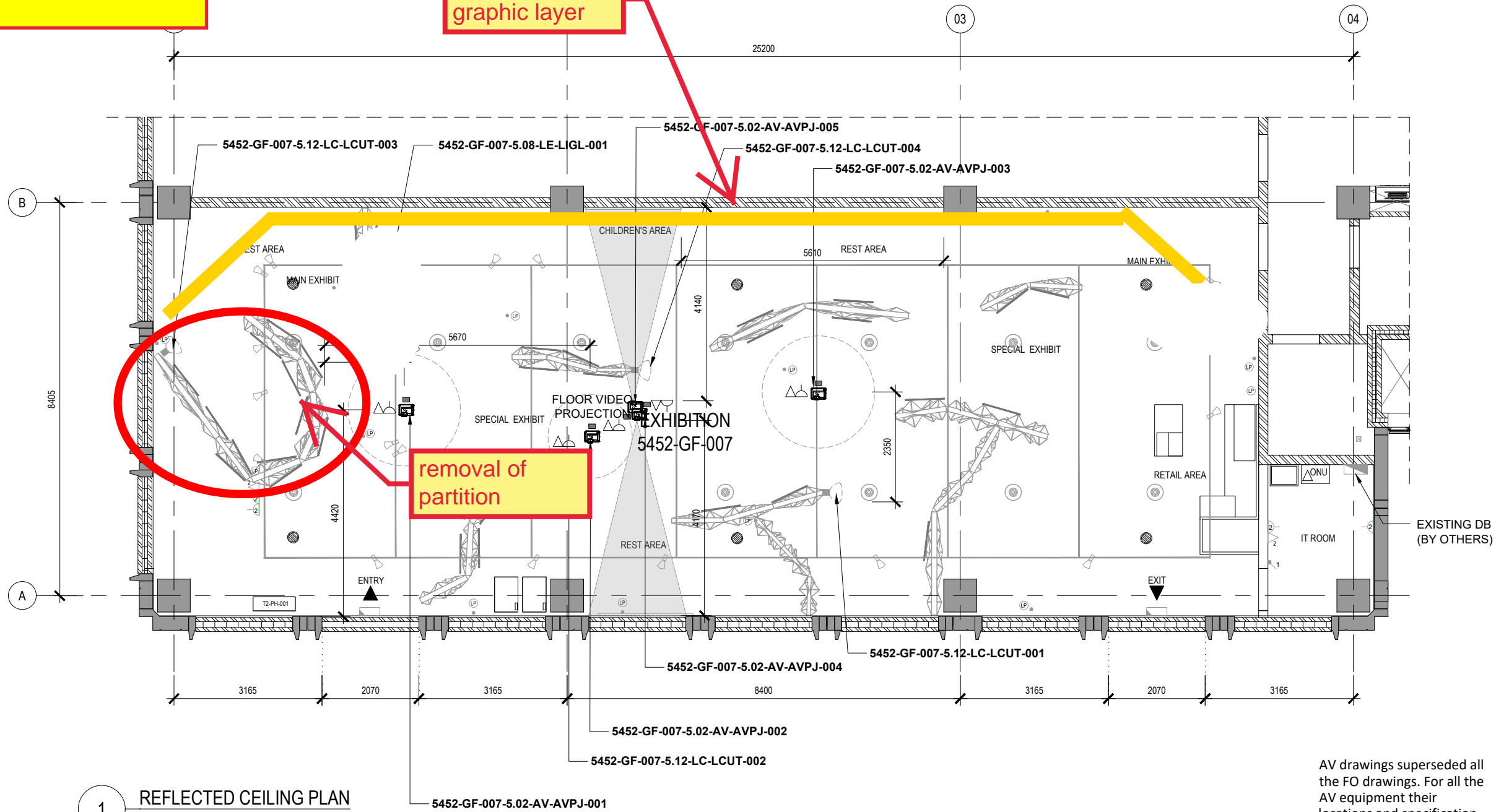
AV drawings superseded all the FO drawings. For all the AV equipment their locations and specification refer to the AV package.

LEGEND:		LEGEND:	
SYMBOL	DESCRIPTION	SYMBOL	DESCRIPTION
	INDUSTRY LED, 16W, 1282x145mm, SUSPENDED FITTINGS		WIFI ACCESS POINT
	TRACK LIGHT		CEILING MOUNTED PROJECTOR
	EXISTING LED LIGHTING (BY OTHERS)		PRESENCE SENSORS
	LIGHTING POINT		CEILING MOUNTED SPEAKERS
	EXISTING SUSPENDED LIGHTING TRACK (BY OTHERS) TO BE MODIFIED BY THE EXHIBITION CONTRACTOR AS REQUIRED		HEAD PHONES
	EXISTING EXIT SIGN (BY OTHERS)		43" LCD TV
	EXISTING DISTRIBUTION BOARD (BY OTHERS)		EXISTING ONU (BY OTHERS)
	EXISTING PATCHING CABINET (BY OTHERS)		

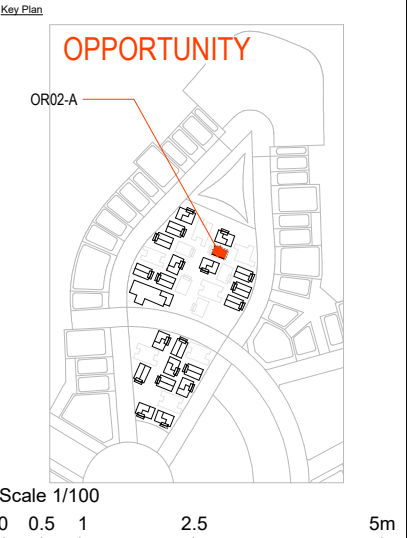
2nd NIGHT

installation of graphic layer

removal of partition



Copyright by Bureau Expo Dubai 2020 (EX20). All rights reserved. This document may not, in whole or in part, be reproduced, stored, transmitted or distributed in any form or by any means, whether electronic, mechanical, by photocopy, recording or otherwise, without the prior written permission of EX20. Except where otherwise expressly agreed in writing by EX20, EX20 shall have no responsibility or liability for any loss (direct, consequential or otherwise) which may arise from reliance on or use of this document or the information contained therein.
DO NOT SCALE THIS DRAWING.



General Notes
AS BUILT
As per approved materials, finishes and documents.

No	Description	Apr	Chk'd	Date
A	ISSUED FOR APPROVAL	--	--	19/06/2020
1	ISSUED FOR APPROVAL	--	--	26/01/2020

Client
EXPO 2020
معرض دبي 2020
DUBAI UNITED ARAB EMIRATES

Programme Management Consultant
ch2m | hince
A CH2M HILL International BV and Hinc International Limited Joint Venture

Design Consultant
ARCHIPLEXUS Architecture & Design

Exhibition Contractor
acciona Producciones y Diseño
ACCIONA Producciones y Diseño
905, API Trio Commercial Tower,
Al Barsha 2 Novotel Al Barsha Building
Sheikh Zayed Road PO Box 118820
Dubai, UAE
TEL: +971 4 3993330
info.aed@acciona.com
www.acciona-apd.com

Sub-Contractor
ELECTRA
Dubai Design District, Bldg. 6
P.O. Box 333011 Dubai, UAE
Tel: +971 4 456 3827
Fax: +971 4 456 3659
www.electra-exhibitions.com

Project Title
THEMATIC DISTRICT PAVILIONS
Project Address
Drawing Title
**EXPO EVENT
U00 / IPA003 / 5452
GF
FLOW SPACE - OR02-A "R" TYPE
REFLECTED CEILING PLAN**

Approved APD	Drawn EA	Checked IK	Seal Date 26/01/2020
Model File Ref. ---	Scale A3 (297x420) 1:100	Revision No. A	
Drawing No 94001-SDW-IPA0035452-FO-2GF203			

1 REFLECTED CEILING PLAN
SCALE 1:100 @ A3

SHOP DRAWING REVIEW Date 05/07/20

- A - No Objection
- B - No Objection subject to comments
- C - Objection
- D - Record Only

Architect's review is for general conformance with the design concept and contract documents. Markings or comments shall not be construed as relieving the contractor from compliance with the project plans and specifications, nor departures therefrom. The contractor remains responsible for details and accuracy, for confirming and correlating all quantities and dimensions, for selecting of the fabrication processes, for techniques of assembly and for performing his work in a safe manner.

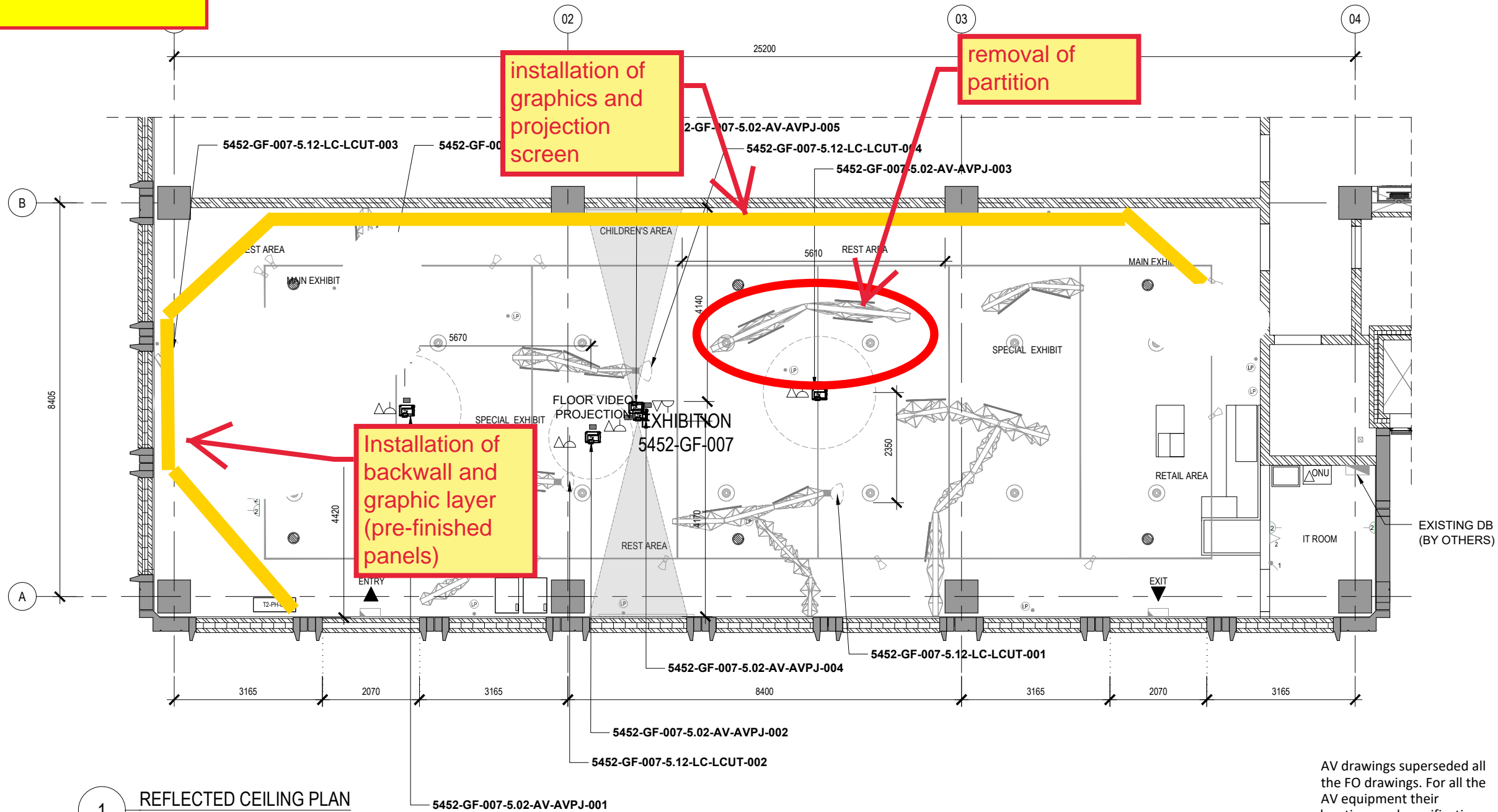
By **Anastasios Kyriazis** ARCHIPLEXUS Architecture & Design

CEILING COLOR SCHEME
CEILING COLOR RAW

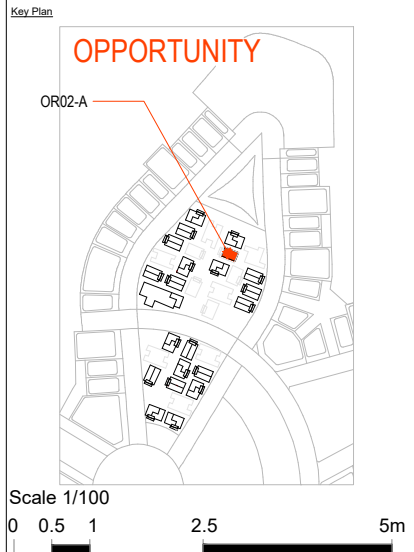
AV drawings superseded all the FO drawings. For all the AV equipment their locations and specification refer to the AV package.

LEGEND:		LEGEND:	
SYMBOL	DESCRIPTION	SYMBOL	DESCRIPTION
	INDUSTRY LED, 16W, 1282x145mm, SUSPENDED FITTINGS		WIFI ACCESS POINT
	TRACK LIGHT		CEILING MOUNTED PROJECTOR
	EXISTING LED LIGHTING (BY OTHERS)		PRESENCE SENSORS
	LIGHTING POINT		CEILING MOUNTED SPEAKERS
	EXISTING SUSPENDED LIGHTING TRACK (BY OTHERS) TO BE MODIFIED BY THE EXHIBITION CONTRACTOR AS REQUIRED		HEAD PHONES
	EXISTING EXIT SIGN (BY OTHERS)		43" LCD TV
	EXISTING DISTRIBUTION BOARD (BY OTHERS)		EXISTING ONU (BY OTHERS)
	EXISTING PATCHING CABINET (BY OTHERS)		

3rd NIGHT



Copyright by Bureau Expo Dubai 2020 (EX20). All rights reserved. This document may not, in whole or in part, be reproduced, stored, transmitted or distributed in any form or by any means, whether electronic, mechanical, by photocopy, recording or otherwise, without the prior written permission of EX20. Except where otherwise expressly agreed in writing by EX20, EX20 shall have no responsibility or liability for any loss (direct, consequential or otherwise) which may arise from reliance on or use of this document or the information contained therein.
DO NOT SCALE THIS DRAWING.



Scale 1/100
0 0.5 1 2.5 5m

General Notes

AS BUILT

As per approved materials, finishes and documents.

No	Description	Apr	Chk'd	Date
A	ISSUED FOR APPROVAL	--	--	19/06/2020
1	ISSUED FOR APPROVAL	--	--	26/01/2020

Client: EXPO 2020

Programme Management Consultant
ch2m | imace
A CH2M HILL International BV and Mace International Limited Joint Venture

Design Consultant
ARCHIPLEXUS Architecture & Design

Exhibition Contractor
acciona Producciones y Diseño
905, API Trio Commercial Tower, Al Barsha 2 Novotel Al Barsha Building Sheikh Zayed Road PO Box 118820 Dubai, UAE
Tel: +971 4 3993330
info.aed@acciona.com
www.acciona-apd.com

Sub-Contractor
ELECTRA
Dubai Design District, Bldg. 6
PO. Box 333011 Dubai, UAE
Tel: +971 4 456 3827
Fax: +971 4 456 3659
www.electra-exhibitions.com

Project Title
THEMATIC DISTRICT PAVILIONS

Project Address
EXPO EVENT U00 / IPA003 / 5452 GF FLOW SPACE - OR02-A "R" TYPE REFLECTED CEILING PLAN

Approved APD	Drawn EA	Checked IK	Seal Date 26/01/2020
Model File Ref. ---	Scale A3 (297x420) 1:100	Revision No. A	
Drawing No. 94001-SDW-IPA0035452-FO-2GF203			

1 REFLECTED CEILING PLAN
SCALE 1:100 @ A3

SHOP DRAWING REVIEW Date 05/07/20

- A - No Objection
- B - No Objection subject to comments
- C - Objection
- D - Record Only

Architect's review is for general conformance with the design concept and contract documents. Markings or comments shall not be construed as relieving the contractor from compliance with the project plans and specifications, nor departures therefrom. The contractor remains responsible for details and accuracy, for confirming and correlating all quantities and dimensions, for selecting of the fabrication processes, for techniques of assembly and for performing his work in a safe manner.

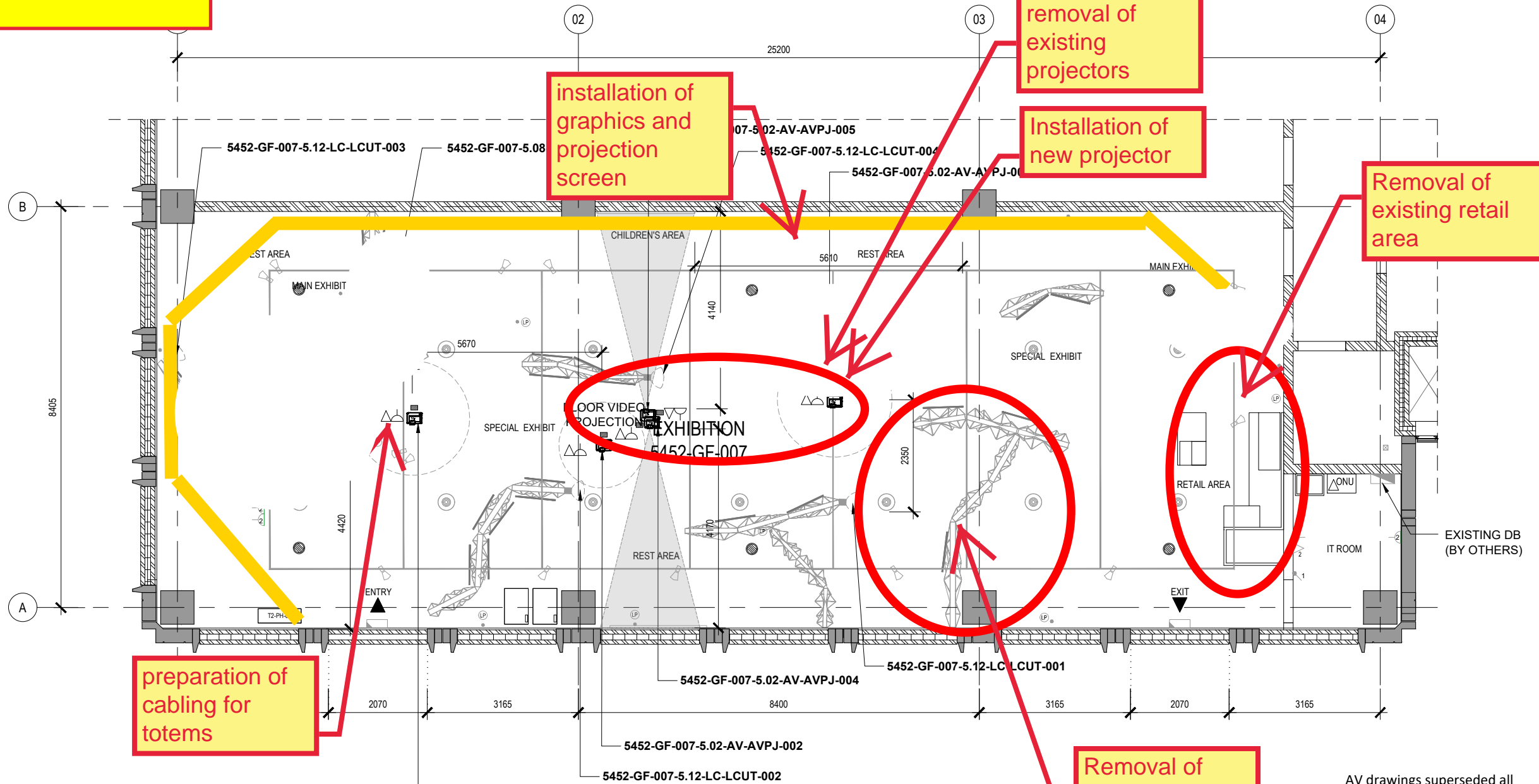
By **Anastasios Kyriazis** ARCHIPLEXUS Architecture & Design

CEILING COLOR SCHEME
CEILING COLOR RAW

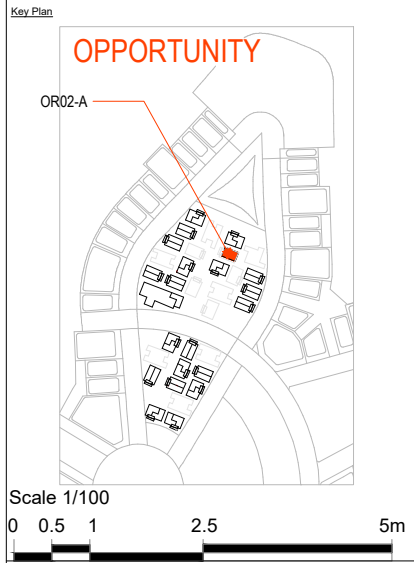
AV drawings superseded all the FO drawings. For all the AV equipment their locations and specification refer to the AV package.

LEGEND:			
SYMBOL	DESCRIPTION	SYMBOL	DESCRIPTION
	INDUSTRY LED, 16W, 1282x145mm, SUSPENDED FITTINGS		WiFi ACCESS POINT
	TRACK LIGHT		CEILING MOUNTED PROJECTOR
	EXISTING LED LIGHTING (BY OTHERS)		PRESENCE SENSORS
	LIGHTING POINT		CEILING MOUNTED SPEAKERS
	EXISTING SUSPENDED LIGHTING TRACK (BY OTHERS) TO BE MODIFIED BY THE EXHIBITION CONTRACTOR AS REQUIRED		HEAD PHONES
	EXISTING EXIT SIGN (BY OTHERS)		43" LCD TV
	EXISTING DISTRIBUTION BOARD (BY OTHERS)		EXISTING ONU (BY OTHERS)
	EXISTING PATCHING CABINET (BY OTHERS)		

4th NIGHT



Copyright by Bureau Expo Dubai 2020 (EX20). All rights reserved. This document may not, in whole or in part, be reproduced, stored, transmitted or distributed in any form or by any means, whether electronic, mechanical, by photocopy, recording or otherwise, without the prior written permission of EX20. Except where otherwise expressly agreed in writing by EX20, EX20 shall have no responsibility or liability for any loss (direct, consequential or otherwise) which may arise from reliance on or use of this document or the information contained therein.
DO NOT SCALE THIS DRAWING.



General Notes
AS BUILT
As per approved materials, finishes and documents.

No	Description	Apr	Chk'd	Date
A	ISSUED FOR APPROVAL	--	--	19/06/2020
1	ISSUED FOR APPROVAL	--	--	26/01/2020

Client
EXPO 2020
معرض دبي 2020
DUBAI UNITED ARAB EMIRATES

Programme Management Consultant
ch2m | hince
A CH2M HILL International BV and Hinc International Limited Joint Venture

Design Consultant
ARCHIPLEXUS Architecture & Design

Exhibition Contractor
acciona Producciones y Diseño
ACCIONA Producciones y Diseño
905, API Trio Commercial Tower,
Al Barsha 2 Novotel Al Barsha Building
Sheikh Zayed Road PO Box 118820
Dubai, UAE
TEL: +971 4 3993330
info.aed@acciona.com
www.acciona-apd.com

Sub-Contractor
ELECTRA
Dubai Design District, Bldg. 6
PO. Box 333011 Dubai, UAE
Tel: +971 4 456 3827
Fax: +971 4 456 3659
www.electra-exhibitions.com

Project Title
THEMATIC DISTRICT PAVILIONS
Project Address
Drawing Title
**EXPO EVENT
U00 / IPA003 / 5452
GF
FLOW SPACE - OR02-A "R" TYPE
REFLECTED CEILING PLAN**

Approved APD	Drawn EA	Checked IK	Seal Date 26/01/2020
Model File Ref. ---	Scale A3 (297x420) 1:100	Revision No. A	
Drawing No 94001-SDW-IPA0035452-FO-2GF203			

1 REFLECTED CEILING PLAN
SCALE 1:100 @ A3

SHOP DRAWING REVIEW Date 05/07/20

- A - No Objection
- B - No Objection subject to comments
- C - Objection
- D - Record Only

Architect's review is for general conformance with the design concept and contract documents. Markings or comments shall not be construed as relieving the contractor from compliance with the project plans and specifications, nor departures therefrom. The contractor remains responsible for details and accuracy, for confirming and correlating all quantities and dimensions, for selecting of the fabrication processes, for techniques of assembly and for performing his work in a safe manner.

By **Anastasios Kyriazis** ARCHIPLEXUS Architecture & Design

CEILING COLOR SCHEME
CEILING COLOR RAW

LEGEND:		LEGEND:	
SYMBOL	DESCRIPTION	SYMBOL	DESCRIPTION
	INDUSTRY LED, 16W, 1282x145mm, SUSPENDED FITTINGS		WiFi ACCESS POINT
	TRACK LIGHT		CEILING MOUNTED PROJECTOR
	EXISTING LED LIGHTING (BY OTHERS)		PRESENCE SENSORS
	LIGHTING POINT		CEILING MOUNTED SPEAKERS
	EXISTING SUSPENDED LIGHTING TRACK (BY OTHERS) TO BE MODIFIED BY THE EXHIBITION CONTRACTOR AS REQUIRED		HEAD PHONES
	EXISTING EXIT SIGN (BY OTHERS)		43" LCD TV
	EXISTING DISTRIBUTION BOARD (BY OTHERS)		EXISTING ONU (BY OTHERS)
	EXISTING PATCHING CABINET (BY OTHERS)		

AV drawings superseded all the FO drawings. For all the AV equipment their locations and specification refer to the AV package.

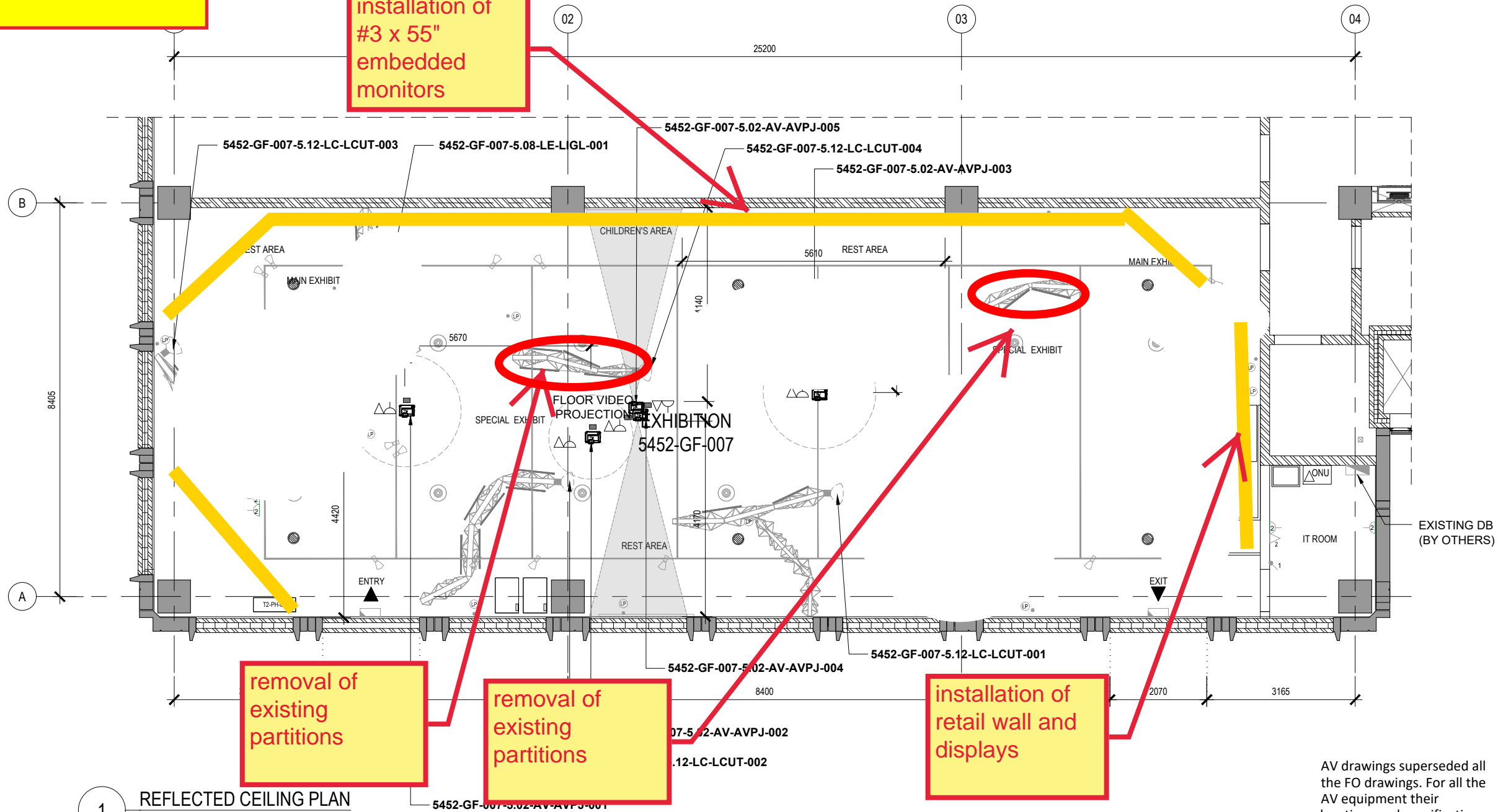
5th NIGHT

installation of #3 x 55" embedded monitors

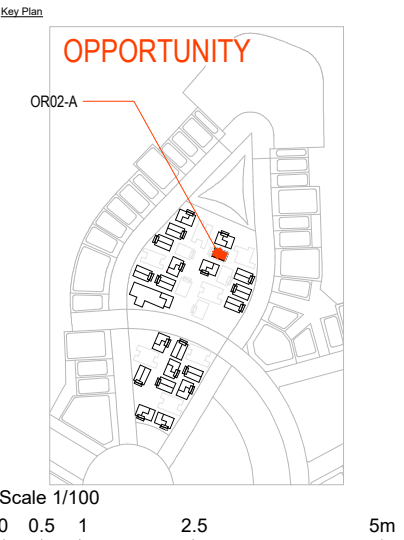
removal of existing partitions

removal of existing partitions

installation of retail wall and displays



Copyright by Bureau Expo Dubai 2020 (EX20). All rights reserved. This document may not, in whole or in part, be reproduced, stored, transmitted or distributed in any form or by any means, whether electronic, mechanical, by photocopy, recording or otherwise, without the prior written permission of EX20. Except where otherwise expressly agreed in writing by EX20, EX20 shall have no responsibility or liability for any loss (direct, consequential or otherwise) which may arise from reliance on or use of this document or the information contained therein.
DO NOT SCALE THIS DRAWING.



Scale 1/100
0 0.5 1 2.5 5m

AS BUILT
As per approved materials, finishes and documents.

General Notes

No. Description

SAFETY, HEALTH AND ENVIRONMENT INFORMATION
Brief details on the identified hazard symbol referencing the unusual residual hazards / risks are listed above.

Rev	Description	Apr	Chk'd	Date
A	ISSUED FOR APPROVAL	--	--	19/06/2020
1	ISSUED FOR APPROVAL	--	--	26/01/2020



Project Title
THEMATIC DISTRICT PAVILIONS

Project Address

Drawing Title
**EXPO EVENT
U00 / IPA003 / 5452
GF
FLOW SPACE - OR02-A "R" TYPE
REFLECTED CEILING PLAN**

Approved APD	Drawn EA	Checked IK	Seal Date 26/01/2020
Model File Ref. ---	Scale A3 (297x420) 1:100	Revision No. A	
Drawing No. 94001-SDW-IPA0035452-FO-2GF203			

1 REFLECTED CEILING PLAN
SCALE 1:100 @ A3

SHOP DRAWING REVIEW Date 05/07/20

A - No Objection
 B - No Objection subject to comments
 C - Objection
 D - Record Only

Architect's review is for general conformance with the design concept and contract documents. Markings or comments shall not be construed as relieving the contractor from compliance with the project plans and specifications, nor departures therefrom. The contractor remains responsible for details and accuracy, for confirming and correlating all quantities and dimensions, for selecting of the fabrication processes, for techniques of assembly and for performing his work in a safe manner.

By **Anastasios Kyriazis** ARCHIPLEXUS Architecture & Design

CEILING COLOR SCHEME

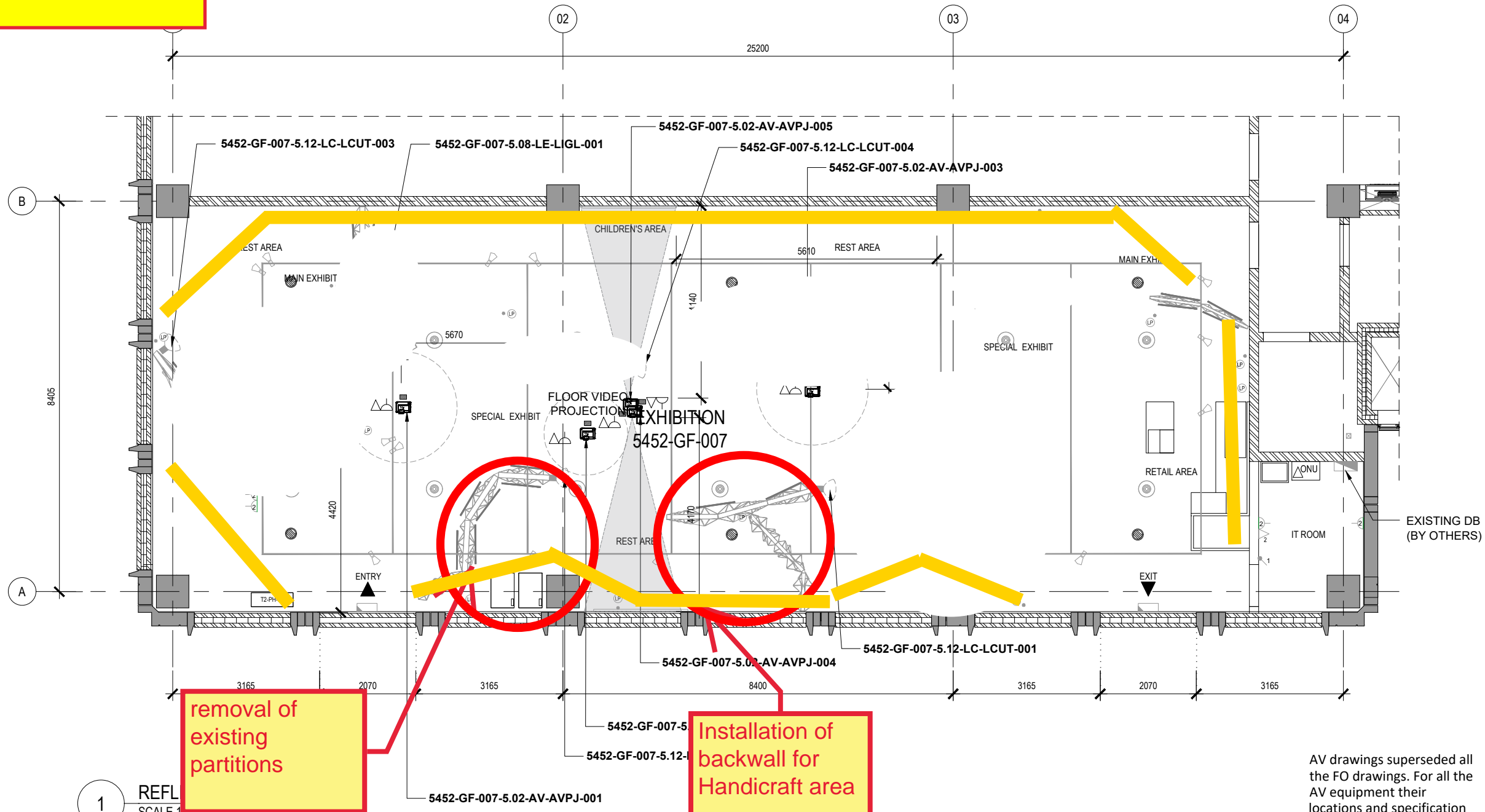
CEILING COLOR	RAW
---------------	-----

LEGEND:

SYMBOL	DESCRIPTION	SYMBOL	DESCRIPTION
	INDUSTRY LED, 16W, 1282x145mm, SUSPENDED FITTINGS		WIFI ACCESS POINT
	TRACK LIGHT		CEILING MOUNTED PROJECTOR
	EXISTING LED LIGHTING (BY OTHERS)		PRESENCE SENSORS
	LIGHTING POINT		CEILING MOUNTED SPEAKERS
	EXISTING SUSPENDED LIGHTING TRACK (BY OTHERS) TO BE MODIFIED BY THE EXHIBITION CONTRACTOR AS REQUIRED		HEAD PHONES
	EXISTING EXIT SIGN (BY OTHERS)		43" LCD TV
	EXISTING DISTRIBUTION BOARD (BY OTHERS)		EXISTING ONU (BY OTHERS)
	EXISTING PATCHING CABINET (BY OTHERS)		

AV drawings superseded all the FO drawings. For all the AV equipment their locations and specification refer to the AV package.

6th NIGHT

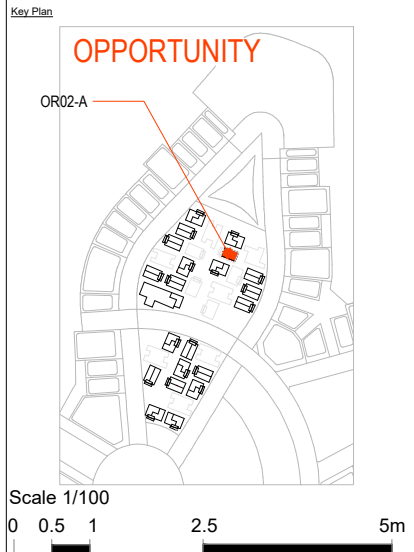


removal of existing partitions

Installation of backwall for Handicraft area

AV drawings superseded all the FO drawings. For all the AV equipment their locations and specification refer to the AV package.

Copyright by Bureau Expo Dubai 2020 (EX20). All rights reserved. This document may not, in whole or in part, be reproduced, stored, transmitted or distributed in any form or by any means, whether electronic, mechanical, by photocopy, recording or otherwise, without the prior written permission of EX20. Except where otherwise expressly agreed in writing by EX20, EX20 shall have no responsibility or liability for any loss (direct, consequential or otherwise) which may arise from reliance on or use of this document or the information contained therein.
DO NOT SCALE THIS DRAWING.



General Notes
AS BUILT
As per approved materials, finishes and documents.

No	Description	Apr	Chk'd	Date
A	ISSUED FOR APPROVAL	--	--	19/06/2020
1	ISSUED FOR APPROVAL	--	--	26/01/2020

Client
EXPO 2020
معرض دبي 2020
DUBAI UNITED ARAB EMIRATES

Programme Management Consultant
ch2m | hince
A CH2M HILL International TV and Hince International United Joint Venture

Design Consultant
ARCHIPLEXUS Architecture & Design

Exhibition Contractor
acciona Producciones y Diseño
ACCIONA Producciones y Diseño
905, API Trio Commercial Tower,
Al Barsha 2 Novotel Al Barsha Building
Sheikh Zayed Road PO Box 118820
Dubai, UAE
TEL: +971 4 3993330
info.aed@acciona.com
www.acciona-apd.com

Sub-Contractor
ELECTRA
Dubai Design District, Bldg. 6
P.O. Box 333011 Dubai, UAE
Tel: +971 4 456 3827
Fax: +971 4 456 3659
www.electra-exhibitions.com

Project Title
THEMATIC DISTRICT PAVILIONS

Project Address
**EXPO EVENT
U00 / IPA003 / 5452
GF
FLOW SPACE - OR02-A "R" TYPE
REFLECTED CEILING PLAN**

Approved	Drawn	Checked	Seal Date
APD	EA	IK	26/01/2020
Model File Ref:	Scale A3 (297x420)	Revision No:	
---	1:100	A	

Drawing No
94001-SDW-IPA0035452-FO-2GF203

SHOP DRAWING REVIEW Date 05/07/20

- A - No Objection
- B - No Objection subject to comments
- C - Objection
- D - Record Only

Architect's review is for general conformance with the design concept and contract documents. Markings or comments shall not be construed as relieving the contractor from compliance with the project plans and specifications, nor departures therefrom. The contractor remains responsible for details and accuracy, for confirming and correlating all quantities and dimensions, for selecting of the fabrication processes, for techniques of assembly and for performing his work in a safe manner.

By **Anastasios Kyriazis** ARCHIPLEXUS Architecture & Design

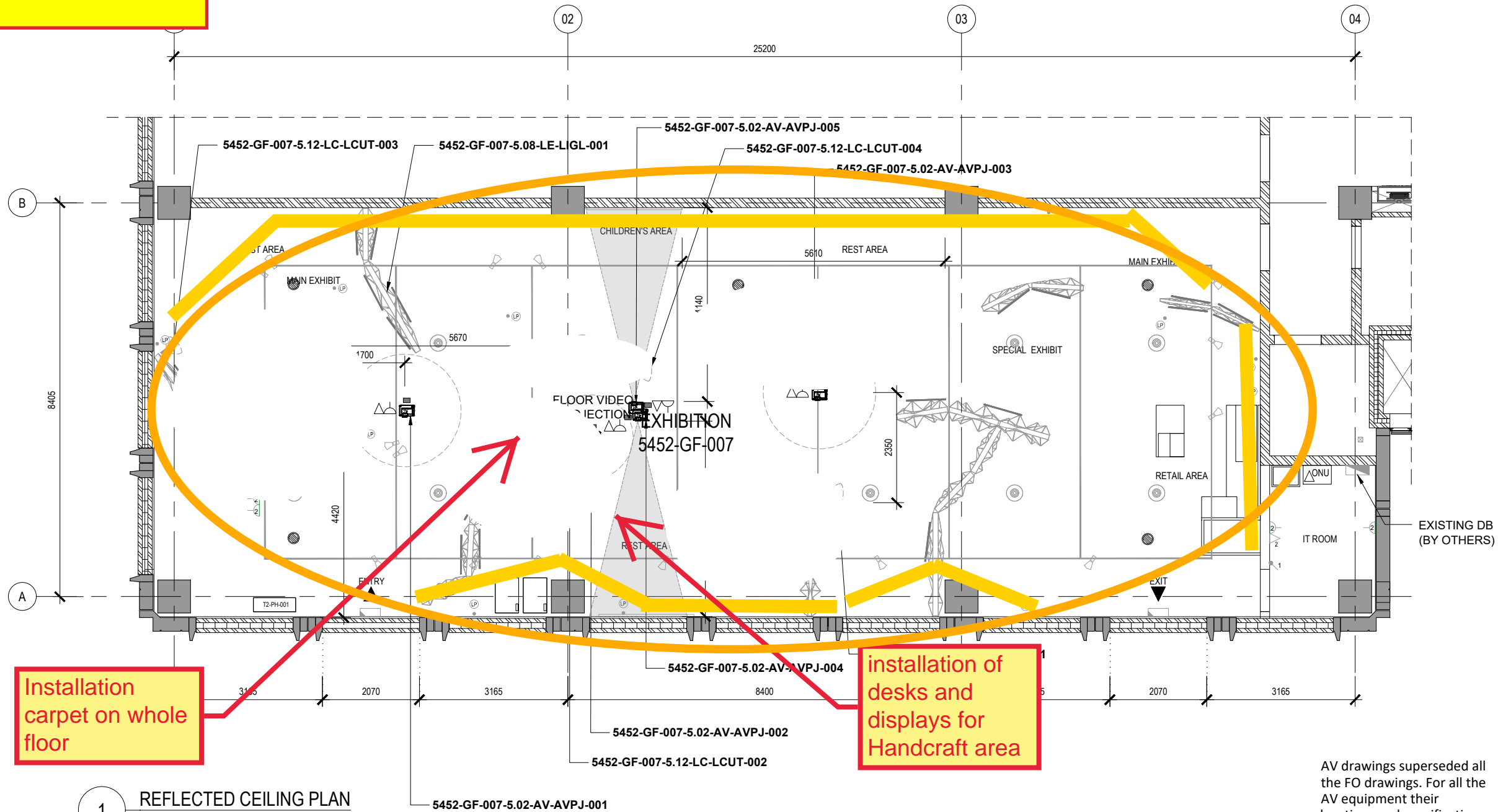
CEILING COLOR SCHEME

CEILING COLOR	RAW
---------------	-----

LEGEND:

SYMBOL	DESCRIPTION	SYMBOL	DESCRIPTION
	INDUSTRY LED, 16W, 1282x145mm, SUSPENDED FITTINGS		WIFI ACCESS POINT
	TRACK LIGHT		CEILING MOUNTED PROJECTOR
	EXISTING LED LIGHTING (BY OTHERS)		PRESENCE SENSORS
	LIGHTING POINT		CEILING MOUNTED SPEAKERS
	EXISTING SUSPENDED LIGHTING TRACK (BY OTHERS) TO BE MODIFIED BY THE EXHIBITION CONTRACTOR AS REQUIRED		HEAD PHONES
	EXISTING EXIT SIGN (BY OTHERS)		43" LCD TV
	EXISTING DISTRIBUTION BOARD (BY OTHERS)		EXISTING ONU (BY OTHERS)
	EXISTING PATCHING CABINET (BY OTHERS)		

7th NIGHT



Installation carpet on whole floor

Installation of desks and displays for Handcraft area

1 REFLECTED CEILING PLAN
SCALE 1:100 @ A3

SHOP DRAWING REVIEW Date 05/07/20

- A - No Objection
- B - No Objection subject to comments
- C - Objection
- D - Record Only

Architect's review is for general conformance with the design concept and contract documents. Markings or comments shall not be construed as relieving the contractor from compliance with the project plans and specifications, nor departures therefrom. The contractor remains responsible for details and accuracy, for confirming and correlating all quantities and dimensions, for selecting of the fabrication processes, for techniques of assembly and for performing his work in a safe manner.

By **Anastasios Kyriazis** ARCHIPLEXUS Architecture & Design

CEILING COLOR SCHEME

CEILING COLOR	RAW
---------------	-----

LEGEND:

SYMBOL	DESCRIPTION	SYMBOL	DESCRIPTION
	INDUSTRY LED, 16W, 1282x145mm, SUSPENDED FITTINGS		WiFi ACCESS POINT
	TRACK LIGHT		CEILING MOUNTED PROJECTOR
	EXISTING LED LIGHTING (BY OTHERS)		PRESENCE SENSORS
	LIGHTING POINT		CEILING MOUNTED SPEAKERS
	EXISTING SUSPENDED LIGHTING TRACK (BY OTHERS) TO BE MODIFIED BY THE EXHIBITION CONTRACTOR AS REQUIRED		HEAD PHONES
	EXISTING EXIT SIGN (BY OTHERS)		43" LCD TV
	EXISTING DISTRIBUTION BOARD (BY OTHERS)		EXISTING ONU (BY OTHERS)
	EXISTING PATCHING CABINET (BY OTHERS)		

AV drawings superseded all the FO drawings. For all the AV equipment their locations and specification refer to the AV package.

Copyright by Bureau Expo Dubai 2020 (EX20). All rights reserved. This document may not, in whole or in part, be reproduced, stored, transmitted or distributed in any form or by any means, whether electronic, mechanical, by photocopy, recording or otherwise, without the prior written permission of EX20. Except where otherwise expressly agreed in writing by EX20, EX20 shall have no responsibility or liability for any loss (direct, consequential or otherwise) which may arise from reliance on or use of this document or the information contained therein.
DO NOT SCALE THIS DRAWING.

Key Plan

Scale 1/100
0 0.5 1 2.5 5m

General Notes

AS BUILT
As per approved materials, finishes and documents.

No	Description	Apr	Chk'd	Date
A	ISSUED FOR APPROVAL	--	--	19/06/2020
1	ISSUED FOR APPROVAL	--	--	26/01/2020

Client

Programme Management Consultant

ch2m | imace
A CH2M HILL International BV and Mosa International Limited Joint Venture

Design Consultant

ARCHIPLEXUS Architecture & Design

Exhibition Contractor

ACCIONA Producciones y Diseño
905, API Trio Commercial Tower,
Al Barsha 2 Novotel Al Barsha Building
Sheikh Zayed Road PO Box 118820
Dubai, UAE
TEL: +971 4 3993330
info.aed@acciona.com
www.acciona-apd.com

Sub-Contractor

Dubai Design District, Bldg. 6
PO. Box 333011 Dubai, UAE
Tel: +971 4 456 3827
Fax: +971 4 456 3659
www.electra-exhibitions.com

Project Title

THEMATIC DISTRICT PAVILIONS

Project Address

Drawing Title

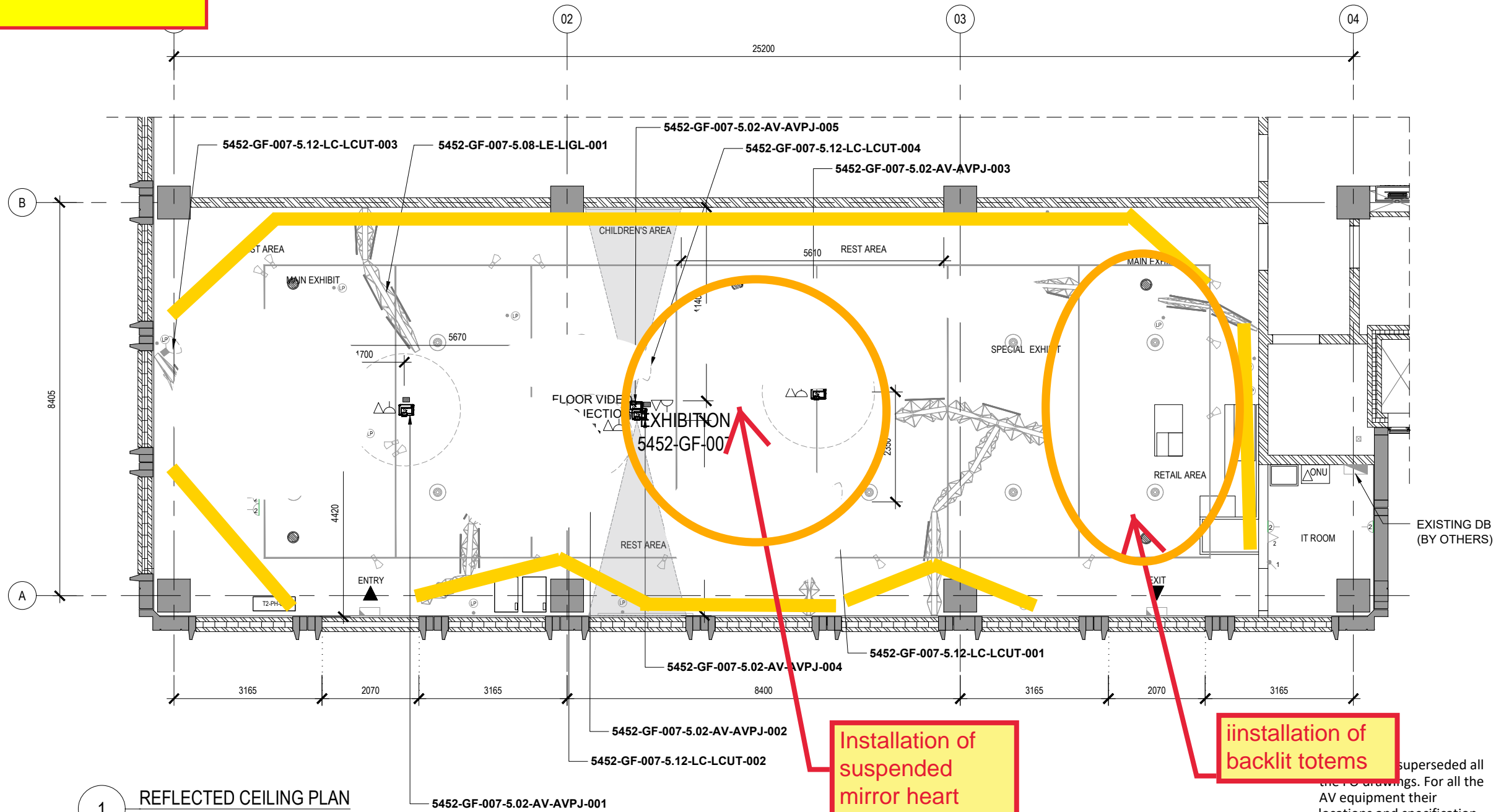
**EXPO EVENT
U00 / IPA003 / 5452
GF
FLOW SPACE - OR02-A "R" TYPE
REFLECTED CEILING PLAN**

Approved	APD	Drawn	EA	Checked	IK
Model File Ref.	---	Scale	A3 (297x420)	Revision No.	A
Scale	1:100				

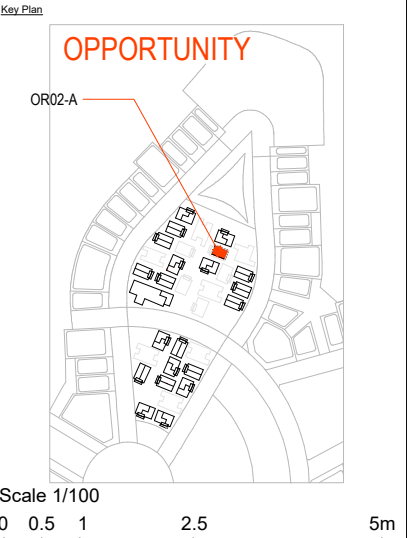
Drawing No

94001-SDW-IPA0035452-FO-2GF203

8th NIGHT



Copyright by Bureau Expo Dubai 2020 (EX20). All rights reserved. This document may not, in whole or in part, be reproduced, stored, transmitted or distributed in any form or by any means, whether electronic, mechanical, by photocopy, recording or otherwise, without the prior written permission of EX20. Except where otherwise expressly agreed in writing by EX20, EX20 shall have no responsibility or liability for any loss (direct, consequential or otherwise) which may arise from reliance on or use of this document or the information contained therein.
DO NOT SCALE THIS DRAWING.



General Notes
AS BUILT
As per approved materials, finishes and documents.

No	Description	Apr	Chk'd	Date
A	ISSUED FOR APPROVAL	--	--	19/06/2020
1	ISSUED FOR APPROVAL	--	--	26/01/2020

Client: **EXPO 2020**
PROGRAMME MANAGEMENT CONSULTANT: **ch2m | imace**

Design Consultant: **ARCHIPLEXUS Architecture & Design**

Exhibition Contractor: **acciona**
Sub-Contractor: **ELECTRA**

Project Title: **THEMATIC DISTRICT PAVILIONS**
Drawing Title: **EXPO EVENT U00 / IPA003 / 5452 GF FLOW SPACE - OR02-A "R" TYPE REFLECTED CEILING PLAN**

Approved APD	Drawn EA	Checked IK	Seal Date 26/01/2020
Model File Ref. ---	Scale A3 (297x420) 1:100	Revision No. A	

Drawing No: **94001-SDW-IPA0035452-FO-2GF203**

1 REFLECTED CEILING PLAN
SCALE 1:100 @ A3

SHOP DRAWING REVIEW Date 05/07/20

- A - No Objection
- B - No Objection subject to comments
- C - Objection
- D - Record Only

Architect's review is for general conformance with the design concept and contract documents. Markings or comments shall not be construed as relieving the contractor from compliance with the project plans and specifications, nor departures therefrom. The contractor remains responsible for details and accuracy, for confirming and correlating all quantities and dimensions, for selecting of the fabrication processes, for techniques of assembly and for performing his work in a safe manner.

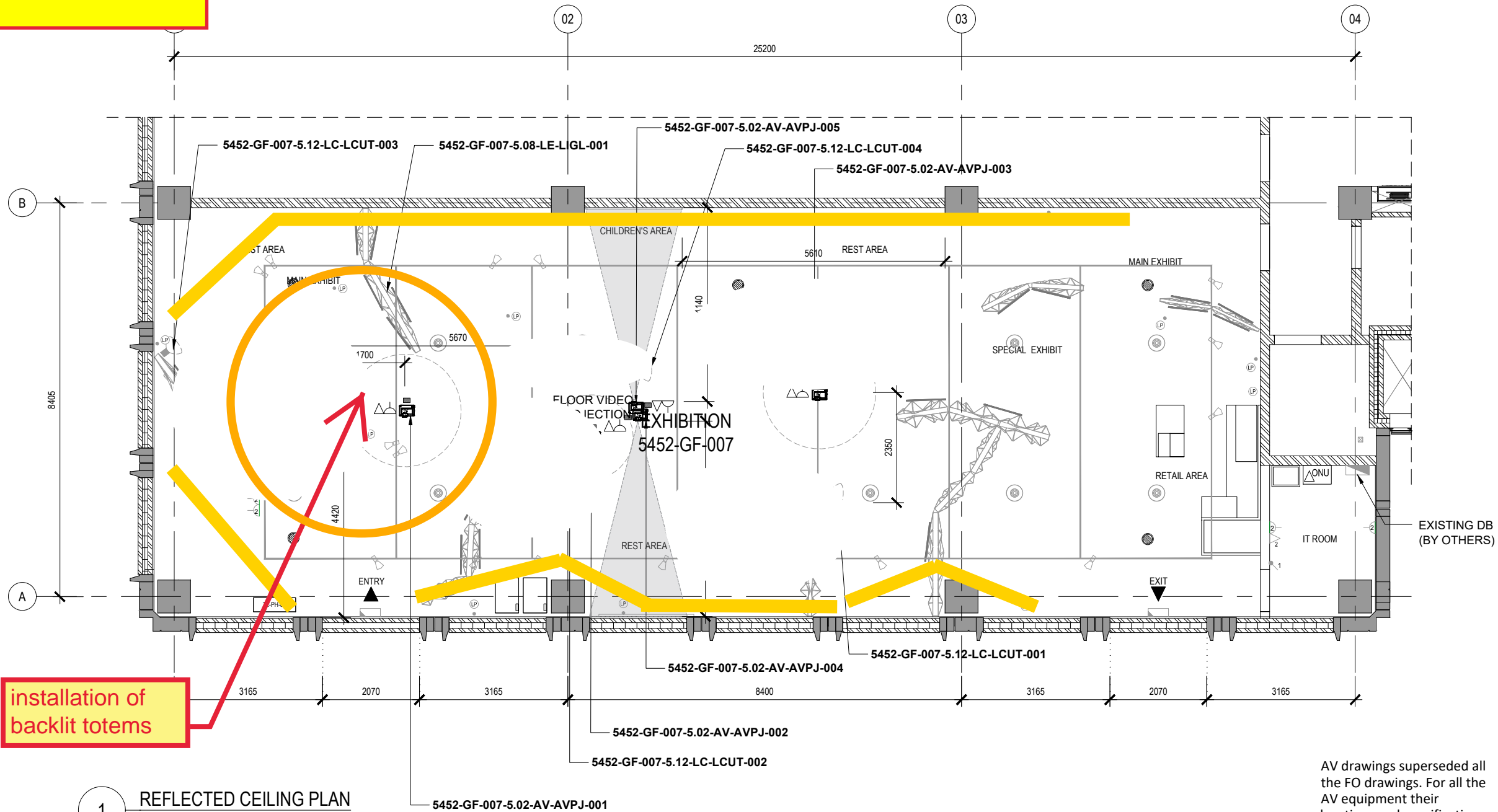
By **Anastasios Kyriazis** ARCHIPLEXUS Architecture & Design

CEILING COLOR SCHEME	
CEILING COLOR	RAW

LEGEND:			
SYMBOL	DESCRIPTION	SYMBOL	DESCRIPTION
	INDUSTRY LED, 16W, 1282x145mm, SUSPENDED FITTINGS		WIFI ACCESS POINT
	TRACK LIGHT		CEILING MOUNTED PROJECTOR
	EXISTING LED LIGHTING (BY OTHERS)		PRESENCE SENSORS
	LIGHTING POINT		CEILING MOUNTED SPEAKERS
	EXISTING SUSPENDED LIGHTING TRACK (BY OTHERS) TO BE MODIFIED BY THE EXHIBITION CONTRACTOR AS REQUIRED		HEAD PHONES
	EXISTING EXIT SIGN (BY OTHERS)		43" LCD TV
	EXISTING DISTRIBUTION BOARD (BY OTHERS)		EXISTING ONU (BY OTHERS)
	EXISTING PATCHING CABINET (BY OTHERS)		

superseded all the PC drawings. For all the AV equipment their locations and specification refer to the AV package.

9th NIGHT



installation of backlit totems

1 REFLECTED CEILING PLAN
SCALE 1:100 @ A3

SHOP DRAWING REVIEW Date 05/07/20

- A - No Objection
- B - No Objection subject to comments
- C - Objection
- D - Record Only

Architect's review is for general conformance with the design concept and contract documents. Markings or comments shall not be construed as relieving the contractor from compliance with the project plans and specifications, nor departures therefrom. The contractor remains responsible for details and accuracy, for confirming and correlating all quantities and dimensions, for selecting of the fabrication processes, for techniques of assembly and for performing his work in a safe manner.

By **Anastasios Kyriazis** ARCHIPLEXUS Architecture & Design

CEILING COLOR SCHEME	
CEILING COLOR	RAW

LEGEND:			
SYMBOL	DESCRIPTION	SYMBOL	DESCRIPTION
	INDUSTRY LED, 16W, 1282x145mm, SUSPENDED FITTINGS		WiFi ACCESS POINT
	TRACK LIGHT		CEILING MOUNTED PROJECTOR
	EXISTING LED LIGHTING (BY OTHERS)		PRESENCE SENSORS
	LIGHTING POINT		CEILING MOUNTED SPEAKERS
	EXISTING SUSPENDED LIGHTING TRACK (BY OTHERS) TO BE MODIFIED BY THE EXHIBITION CONTRACTOR AS REQUIRED		HEAD PHONES
	EXISTING EXIT SIGN (BY OTHERS)		43" LCD TV
	EXISTING DISTRIBUTION BOARD (BY OTHERS)		EXISTING ONU (BY OTHERS)
	EXISTING PATCHING CABINET (BY OTHERS)		

AV drawings superseded all the FO drawings. For all the AV equipment their locations and specification refer to the AV package.

Copyright by Bureau Expo Dubai 2020 (EX20). All rights reserved. This document may not, in whole or in part, be reproduced, stored, transmitted or distributed in any form or by any means, whether electronic, mechanical, by photocopy, recording or otherwise, without the prior written permission of EX20. Except where otherwise expressly agreed in writing by EX20, EX20 shall have no responsibility or liability for any loss (direct, consequential or otherwise) which may arise from reliance on or use of this document or the information contained therein.
DO NOT SCALE THIS DRAWING.

Key Plan
OPPORTUNITY
OR02-A

Scale 1/100
0 0.5 1 2.5 5m

General Notes
AS BUILT
As per approved materials, finishes and documents.

No	Description	Apr	Chk'd	Date
A	ISSUED FOR APPROVAL	--	--	19/06/2020
1	ISSUED FOR APPROVAL	--	--	26/01/2020

Client
EXPO 2020 **إكسبو 2020**
مبنى المنطقة المتحدة
DUBAI UNITED ARAB EMIRATES

Programme Management Consultant
ch2m | hince
A CH2M HILL International BV and Hinc International Limited Joint Venture

Design Consultant
ARCHIPLEXUS Architecture & Design

Exhibition Contractor
acciona Producciones y Diseño
ACCIONA Producciones y Diseño
905, API Trio Commercial Tower,
Al Barsha 2 Novotel Al Barsha Building
Sheikh Zayed Road PO Box 118820
Dubai, UAE
TEL: +971 4 3993330
info.aed@acciona.com
www.acciona-apd.com

Sub-Contractor
ELECTRA
Dubai Design District, Bldg. 6
PO. Box 333011 Dubai, UAE
Tel: +971 4 456 3827
Fax: +971 4 456 3659
www.electra-exhibitions.com

Project Title
THEMATIC DISTRICT PAVILIONS

Project Address

Drawing Title
**EXPO EVENT
U00 / IPA003 / 5452
GF
FLOW SPACE - OR02-A "R" TYPE
REFLECTED CEILING PLAN**

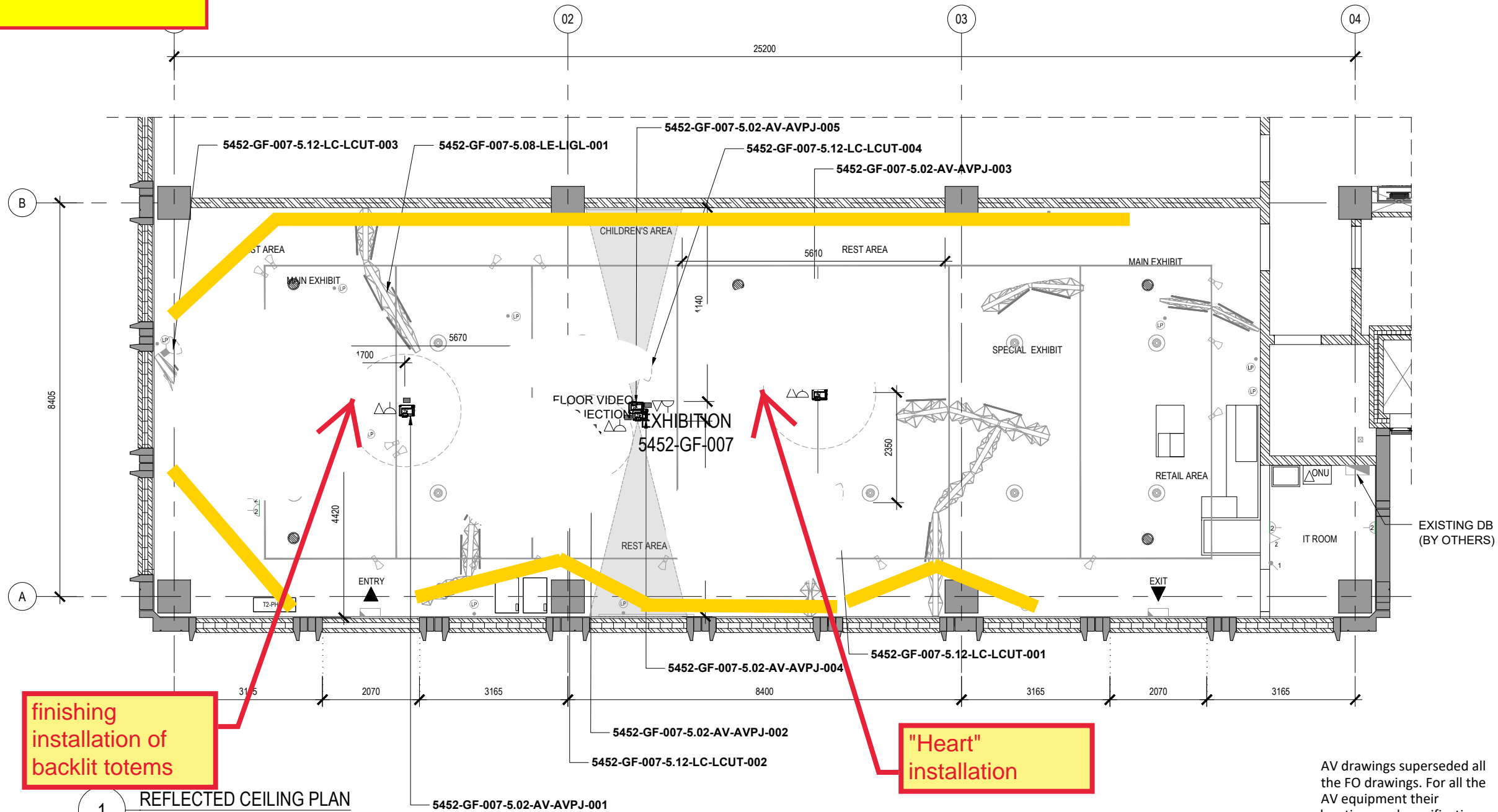
Approved	Seal Date
APD	26/01/2020

Designed	Drawn	Checked
---	EA	IK

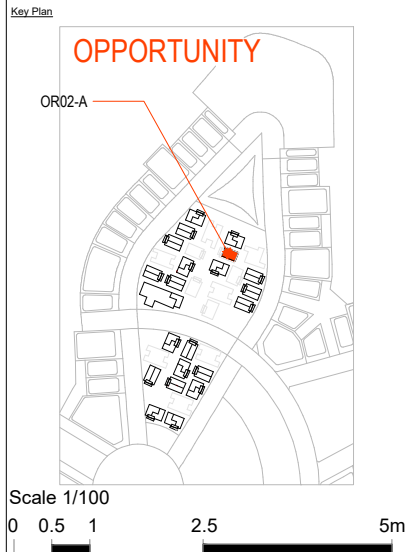
Model File Ref.	Scale	Revision No.
---	A3 (297x420) 1:100	A

Drawing No
94001-SDW-IPA0035452-FO-2GF203

10th NIGHT



Copyright by Bureau Expo Dubai 2020 (EX20). All rights reserved. This document may not, in whole or in part, be reproduced, stored, transmitted or distributed in any form or by any means, whether electronic, mechanical, by photocopy, recording or otherwise, without the prior written permission of EX20. Except where otherwise expressly agreed in writing by EX20, EX20 shall have no responsibility or liability for any loss (direct, consequential or otherwise) which may arise from reliance on or use of this document or the information contained therein.
DO NOT SCALE THIS DRAWING.



General Notes

AS BUILT

As per approved materials, finishes and documents.

No	Description	Apr	Chk'd	Date
A	ISSUED FOR APPROVAL	--	--	19/06/2020
1	ISSUED FOR APPROVAL	--	--	26/01/2020

Client

Programme Management Consultant

PROGRAMME MANAGEMENT CONSULTANT

Design Consultant

ARCHIPLEXUS Architecture & Design

Exhibition Contractor

Sub-Contractor

Project Title

THEMATIC DISTRICT PAVILIONS

Project Address

Drawing Title

**EXPO EVENT
U00 / IPA003 / 5452
GF
FLOW SPACE - OR02-A "R" TYPE
REFLECTED CEILING PLAN**

Approved	APD	Seal Date	26/01/2020
Designed	EA	Checked	IK
Model File Ref.	---	Revision No.	A
Drawing No.	94001-SDW-IPA0035452-FO-2GF203		

finishing installation of backlit totems

"Heart" installation

AV drawings superseded all the FO drawings. For all the AV equipment their locations and specification refer to the AV package.

1 REFLECTED CEILING PLAN
SCALE 1:100 @ A3

SHOP DRAWING REVIEW Date 05/07/20

- A - No Objection
- B - No Objection subject to comments
- C - Objection
- D - Record Only

Architect's review is for general conformance with the design concept and contract documents. Markings or comments shall not be construed as relieving the contractor from compliance with the project plans and specifications, nor departures therefrom. The contractor remains responsible for details and accuracy, for confirming and correlating all quantities and dimensions, for selecting of the fabrication processes, for techniques of assembly and for performing his work in a safe manner.

By **Anastasios Kyriazis** ARCHIPLEXUS Architecture & Design

CEILING COLOR SCHEME

CEILING COLOR RAW

LEGEND:

SYMBOL	DESCRIPTION	SYMBOL	DESCRIPTION
	INDUSTRY LED, 16W, 1282x145mm, SUSPENDED FITTINGS		WIFI ACCESS POINT
	TRACK LIGHT		CEILING MOUNTED PROJECTOR
	EXISTING LED LIGHTING (BY OTHERS)		PRESENCE SENSORS
	LIGHTING POINT		CEILING MOUNTED SPEAKERS
	EXISTING SUSPENDED LIGHTING TRACK (BY OTHERS) TO BE MODIFIED BY THE EXHIBITION CONTRACTOR AS REQUIRED		HEAD PHONES
	EXISTING EXIT SIGN (BY OTHERS)		43" LCD TV
	EXISTING DISTRIBUTION BOARD (BY OTHERS)		EXISTING ONU (BY OTHERS)
	EXISTING PATCHING CABINET (BY OTHERS)		